

Strong, versatile and extremely robust robotic arm, with two hydraulic sections, protected hydraulic cylinders inside the tubes for a longer durability and easier maintenance. 270° rotatory head by crown gear and hydraulic orbital motor. Crown gear onto turret, activated by hydraulic orbital motor and 360 degrees turn.

Equipped with a 5.5 Kw electrical motor for activating the hydraulic gear pump which provides the suitable flow for working.

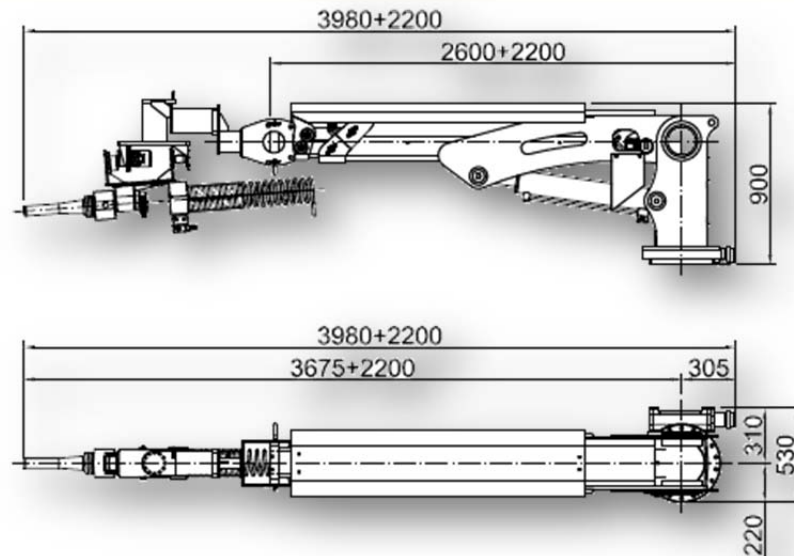


The hydraulic distributor block SAUER-DANFOSS brand, can be also manually manipulated from the block itself.


The **b9** arm is operated from hydraulic block and from remote control, equally by radio or cable.

Remote control with controls for additive pump is provided as optional.






Its reduced size makes it the suitable tool for shotcreting in small dimension tunnels and mine sites: Small transport size and large reach and versatility of movement when at work.

Robotic arm 
mounted onto our
shotcrete robot
SPRAYCON 20.9



The robotic arm  is designed for being mounted onto any type of fixed or mobile equipment thanks to its reduced dimensions.

It is perfect for applying sprayed concrete to galleries and banks.

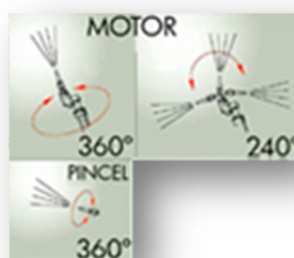
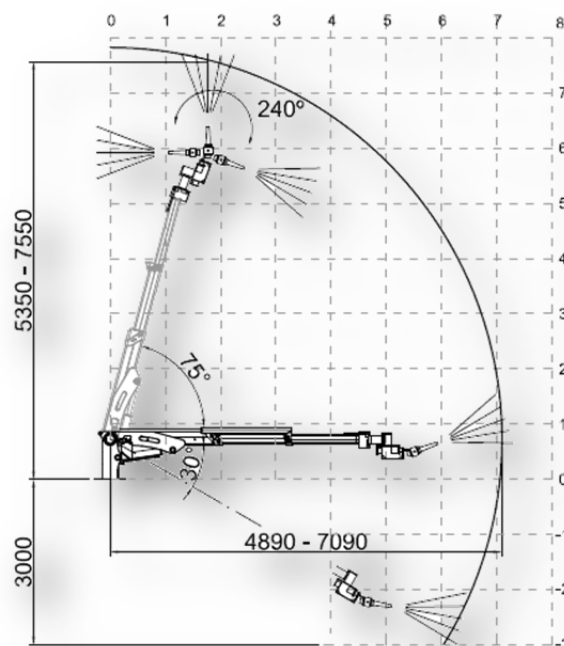
Robotic arm  mounted onto truck for autonomous works



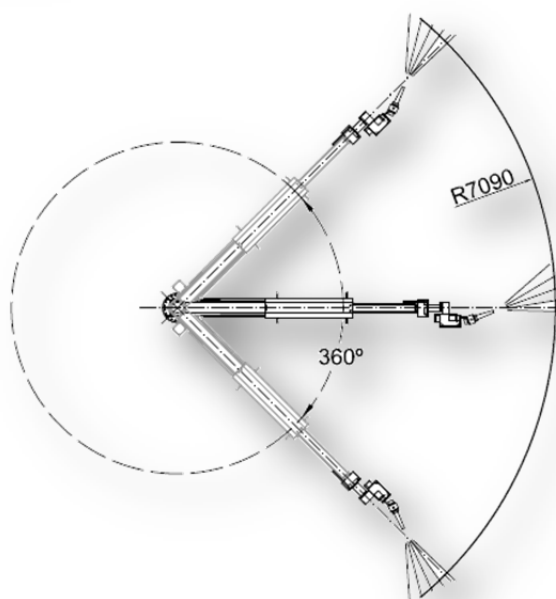
Robotic arm is provided with:

- Dual remote control cable + radio
- Spraying head
- Nozzle
- Difusser
- 3" shotcrete hose
- Additive hose
- Additional current according to client's needs (Optional)
- Hydraulic block prepared for manual use
- Working lights
- POWER PACK (Electrical motor of 5,5 Kw/1,450 rpm + gears pump of 35cc) (Optional)

SPECIFICATIONS	
MINIMUM LENGHT	4,190 mm
WIDTH	530 mm / 810 mm
HEIGHT	7,090 mm PLUS TURRET
WEIGHT	500 Kg
VERTICAL REACH FROM CROWN GEAR	6.5 mt
HORIZONTAL REACH	6 mt
ARM ROTATION (LATERAL)	360°
ARM TILT (UP / DOWN)	75°
SPRAYING HEAD ROTATION	360°
INCLINACIÓN DEL CABEZAL PROYECTOR	240°
SHOTCRETE MAXIMUM REACH FROM CROWN GEAR	7.5 mt
REMOTE CONTROL	DUAL CABLE + RADIO



Movements of
Head and Nozzle.



Due to the constant process of improvement at factory, all data are subject to modification without prior notice, being merely illustrative all data in this catalogue.

MADRID: Ctra de Valencia, Km 19,200. 28524 RIVAS VACIAMADRID (MADRID). FAX: +34916701005. e-mail:madrid@mlorenzana.com

LEÓN: Pol. Ind. Villacedré. 24009 VILLACEDRÉ (LEÓN). FAX: +34987849036. e-mail:leon@mlorenzana.com

www.mlorenzana.com +34 902 151 236

